

**YE**  
SERIES®

**Yale®**

## Yale Edge Series®

Get the Yale Edge on value, quality and savings – all from the brand you trust. Our most economical lock solution for your home or project.

- Designed to meet Grade 3 standards for value and security
- Removable cylinder for ease of re-keying without special tools
- Non-handed levers lowers inventory needs, minimizes mistakes
- Warranty: 1 year finish / 5 year mechanical
- ADA: Selection of lever styles available with push button to meet ADA requirements
- Finishes: US3 Polished Brass  
US10BP Oil Rubbed Bronze  
US15 Satin Nickel  
US26D Satin Chrome  
US32D Stainless Steel  
BLK Black

Knobs



Levers



Deadbolts



Handlesets



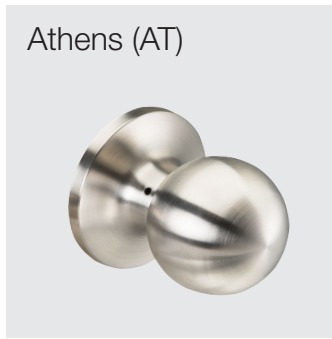
Pocket Door Locks



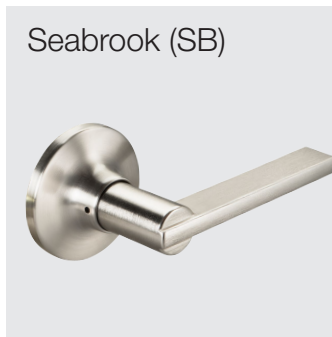
**Yale®**

The World's Favorite Lock, Since 1840.™

# Knobs



# Levers



### FUNCTION

**KNOB/LEVER**

**DUMMY** 80/81

**PASSAGE** 10/11

**PRIVACY** 20/21

**ENTRY** 70/71

### ADA FUNCTIONS

**KNOB/LEVER**

**PRIVACY** 23

**ENTRY** 73

Design	US3	US10BP	US15	US26D	US32D	BLK
<b>Knobs</b>						
<b>Athens</b>	•*	•*	•*		•	
<b>Sinclair</b>	•*	•*	•*			•*
<b>Waycross</b>		•*	•*			
<b>Levers</b>						
<b>Alpharetta</b>	•	•	•†‡			
<b>Edisto</b>		•*†	•*†	•*		
<b>Keowee</b>	•*	•*†‡	•*†‡			
<b>Seabrook</b>		•*†	•*†			
<b>Seabrook SQ</b>		•*	•*			•*
<b>Wando</b>		•*	•*†			

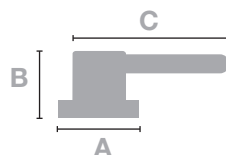
Keowee Dummy - specify handing.

\*Specify KW-1 or SC-1 for compatible cylinder in these entry selections.

† ADA Entry ‡ ADA Privacy

### DIMENSIONS

	A	B	C
<b>Athens</b>	2 7/16"	2 33/64"	2"
<b>Sinclair</b>	2 7/16"	2 3/8"	2 13/64"
<b>Waycross</b>	2 7/16"	2 1/2"	2 7/16"
<b>Alpharetta</b>	2 7/16"	2 1/4"	3 45/64"
<b>Edisto</b>	2 7/16"	2 7/16"	4 7/32"
<b>Keowee</b>	2 7/16"	2 9/16"	4 3/32"
<b>Seabrook</b>	2 7/16"	2 9/16"	4 5/8"
<b>Seabrook SQ</b>	2 1/2"	2 9/16"	4 5/8"
<b>Wando</b>	2 7/16"	2 1/2"	4 5/8"



# Deadbolts

## FUNCTION

### DEADBOLT

**SINGLE CYL 82E**

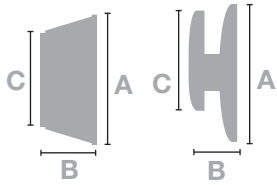
**SINGLE CYL SQ 82ESQ**

**ONESIDED with PLATE 860E**

**ONE WAY 880E**

## DIMENSIONS

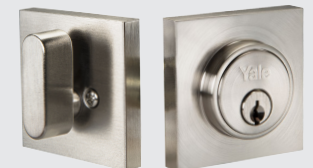
	A	B	C
<b>Deadbolt Interior</b>	2 1/2"	15/16"	2"
<b>Deadbolt Exterior</b>	2 1/2"	1"	1 7/8"
<b>SQ Deadbolt Interior</b>	2 1/2"	7/8"	2"
<b>SQ Deadbolt Interior</b>	2 1/2"	7/8"	2 1/2"



Single Cylinder (82E)



Single Cylinder SQ (82ESQ)



One Sided with Plate (860E)



One Way (880E)



# Pocket Door Locks

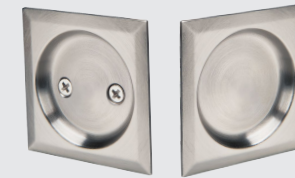
## FUNCTIONS

### POCKET DOOR

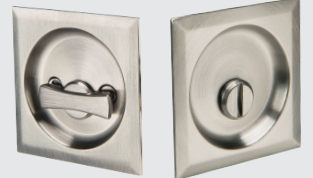
**PASSAGE 10PD**

**PRIVACY 20PD**

Passage



Privacy



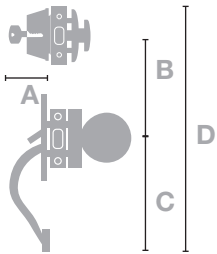
Design	US3	US10BP	US15	US26D	US32D	BLK
<b>Deadbolts</b>						
<b>Deadbolt Sgl Cyl 82E</b>	•*	•*	•*	•* SC1 only	•	•*
<b>Deadbolt Sgl Cyl 82ESQ</b>		•*	•*			•
<b>One Sided with Plate 860E</b>		•	•	•		
<b>One Way 880E</b>		•	•	•		
<b>Pocket Door Locks</b>						
<b>Pocket Passage</b>		•	•			•
<b>Pocket Privacy</b>		•	•			•

\*Specify KW-1 or SC-1 for compatible cylinder in these entry selections.

# Handlesets

**FUNCTION**  
**HANDLESET**  
**SINGLE CYL 927**

DIMENSIONS	A	B	C	D
<b>Johns Creek</b>	2 3/4"	5 1/2"	8 1/2"	19 1/4"
<b>Lenoir</b>	2 31/64"	5 1/2"	8 3/8"	18"
<b>Meyers Park</b>	2 3/8"	5 1/2"	8 1/2"	19 3/8"



Design	US3	US10BP	US15	US26D	US32D	BLK
<b>Handlesets</b>						
<b>Johns Creek**</b>		•*	•*			
<b>Lenoir</b>	•	•*	•*			•
<b>Meyers Park</b>		•	•			

\*Specify KW-1 or SC-1 for compatible cylinder in these entry selections.

\*\*Johns Creek: Sinclair interior only.

## Yale Edge Finishes



Yale® and Yale Edge Series® are registered trademarks of ASSA ABLOY Residential Group. © Copyright 2019. All rights reserved. Reproduction in whole or in part without the express written permission of ASSA ABLOY Residential Group is prohibited.

YALE, with its unique global reach and range of products, is the world's favorite lock — the preferred solution for securing your home, family and personal belongings. ASSA ABLOY is the global leader in door opening solutions, dedicated to satisfying end-user needs for security, safety and convenience.

099703 7/19

### Community Service

Yale is Habitat for Humanity's national lockset partner and has helped families build strength, stability and self-reliance since 2001.

