

Kwikset SMART KEY™

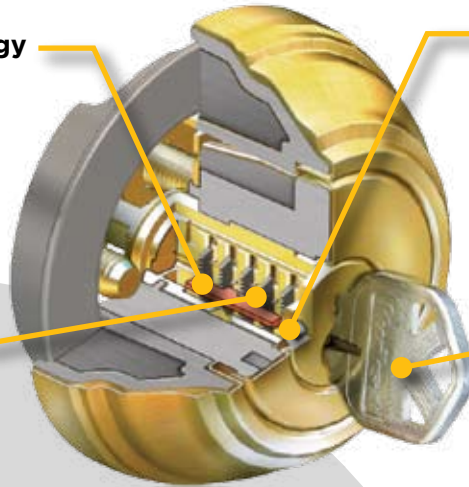
Superior Security In A Completely New Design

BUMPGUARD™

Patented side locking bar technology replaces a traditional pin & tumbler design to protect against lock bumping*.

NEW TECHNOLOGY

Locking bar, racks and pins are made out of stainless steel for increased strength and durability.



DRILL RESISTANCE

Cylinder uses two steel balls inserted into the front of the key face to resist attack from drilling.

KEY IT YOURSELF

Lock is rekeyable by using the included learn tool in less than 30 seconds without removing the lock from the door.

Available in Kwikset® Signature Series™ Keyed Functions



Deadbolts



Handlesets



Levers



Knobs

* Lock bumping - an attack technique using specially cut keys that can defeat conventional pin & tumbler locks.

- INCREASE JOBSITE SECURITY
- CONTROL JOBSITE KEYS
- REDUCE CALLBACKS / SIMPLE ON SITE RE-KEYING
- DRIVE UPGRADES
- HOMEOWNER PEACE OF MIND

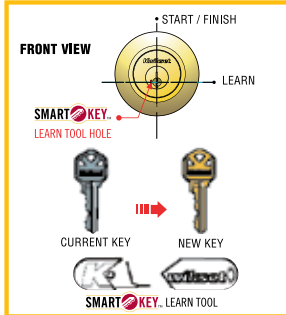


BEFORE YOU START...

These steps show you how to re-key a lock to match a customer's current key, or that of another lock being purchased. For new purchases, the current key is the one that is supplied with the lockset.

These illustrations show a deadbolt for demonstration purposes, but these SmartKey™ rekeying instructions also apply to Kwikset™ keyed knobs, levers, and handlesets.

DEFINITIONS



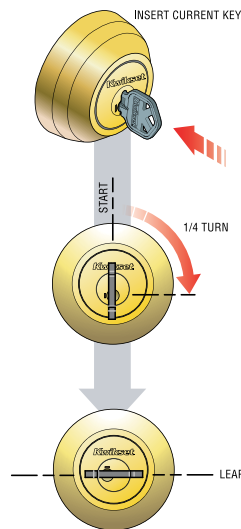
www.kwikset.com/smartkey

WHERE TO GET A LEARN TOOL

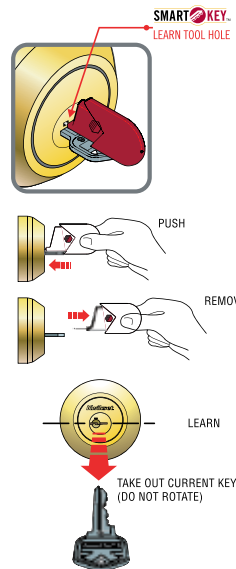
Comes in every Kwikset Signature Series™ package.



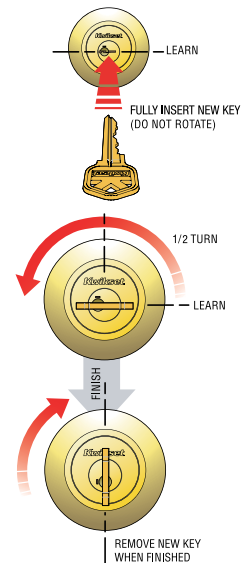
STEP 1 TURN TO LEARN POSITION



STEP 2 INSERT AND REMOVE SMARTKEY™ TOOL



STEP 3 LEARN NEW KEY



*For deadbolts, make sure you grasp the torque blade from behind to prevent the cylinder from spinning freely.



RESET CRADLE

A tool used to reset the cylinder if the original key has been lost or to repair a SmartKey™ cylinder that has been programmed incorrectly.

1



HALF TURN

A Before you begin, rotate lower dial to the right until it stops to align arrow on upper grip with start point ① on inner dial.



B Insert cylinder all the way into the inner dial.



C Rotate lower dial half turn to the left until it stops, where the two arrows meet.

2



A Insert the SmartKey™ tool into the small hole (next to the keyway) on the cylinder face, and push with force until it goes all the way in, then remove the SmartKey™ tool.

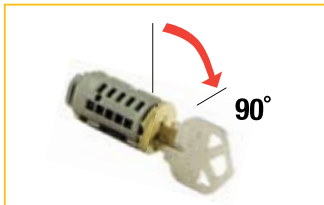


B Insert the key you want to learn in the plug, while being sure not to rotate the plug.



C Remove the plug from the reset cradle by gently pulling on the key.

3



A While holding the cylinder body stationary, rotate the key back to the home position.



B Remove the key.

OK!

C Reinstall cylinder in product.

Kwikset's Reset Cradle is available to order. Please use Item #83260-001

CAUTION To avoid risk of laceration injury, keep reset cradle out of the reach of children and DO NOT insert finger in the center dial hole.