

# Kwikset



## BRETON LEVER

The Breton Lever provides a robust style and sturdiness feel in a contemporary design. It can pair perfectly with any Kwikset contemporary deadbolt. Available with Smartkey Security and Microban on select finishes. It comes in either a round rose or contemporary square rose.



Breton Lever with Smartkey Security  
contemporary square rose in Matte Black



Breton Lever with SmartKey Security  
round rose in Polished Chrome

**#1 SELLING U.S. LOCK BRAND\***

\*Source: TraQline US quarterly brand unit share report, Q4 2006 through Q4 2020

# Specifications

<b>Door Prep</b>	Cross Bore 2-1/8" or 1 1/2". Edge Bore 1"
<b>Backset</b>	Adjustable 2 3/8" or 2 3/4"
<b>Door Thickness</b>	1 3/8" - 1 3/4" Doors standard
<b>Cylinder</b>	SmartKey Security™
<b>Faceplates</b>	1" x 2 1/4" Specify round corner, square corner or drive-in
<b>Strikes</b>	1 1/8" - 2 3/4" Square or round corner

<b>ANSI/BHMA</b>	A156.2 Grade 3
<b>UL</b>	20 minute UL fire rating available
<b>Door Handing</b>	Reversible for right or left hand doors
<b>Warranty</b>	Lifetime Mechanical and Lifetime Finish

# Functions



**Passage/Hall/Closet:** Both levers always free.



**Privacy/Bed/Bath:** Both levers locked or unlocked by push-button inside. Outside lever unlocked by emergency key.

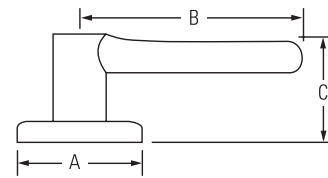


**Keyed Entry Lever:** Both sides locked or unlocked by key outside or push-button inside.



**Half Dummy Trim, Surface Mounted:** For doors whereonly a pull is required. No operation.

# Dimensions



Design	A	B	C	C (Keyed)
Breton Round Rose	2 5/8" (67 mm)	4" (102 mm)	2 7/16 " (62 mm)	2 15/32" (63 mm)
Breton Square Rose	2 5/8" (67 mm)	4" (102 mm)	2 7/16 " (62 mm)	2 15/32" (63 mm)



**Kwikset's SmartKey Security™** provides homeowners with the superior security that is resistant to a variety of advanced break-in methods.

This technology also allows homeowners to re-key their locks themselves in seconds, rendering lost or un-returned keys useless.

# Finishes



Matte Black 514



Satin Nickel 15



Polished Chrome 26

