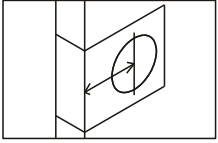


# INSTALLATION GUIDE

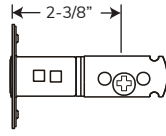
## Elite Series Deadbolt

# Bravura®

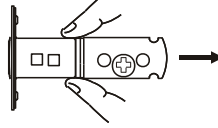
### Adjust & Install Latch



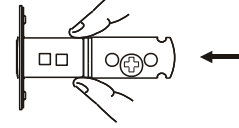
Backset is distance from edge of door to center of hole on door face.



Factory default set to 2-3/8" (60mm) backset.



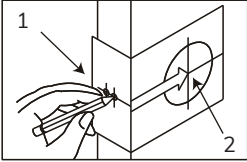
To adjust to 2-3/4" (70mm), grasp body of latch firmly and pull away from face plate.



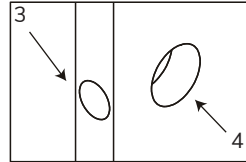
To reset to 2-3/8" backset, grasp body of latch firmly and push toward face plate.

### Prep for Wood Door

Cut out the TEMPLATE below and use for steps below.

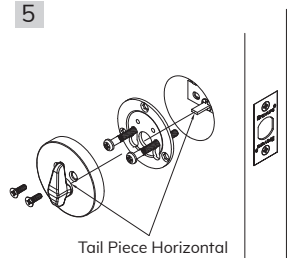
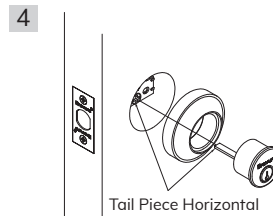
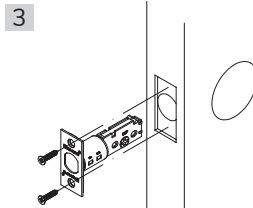
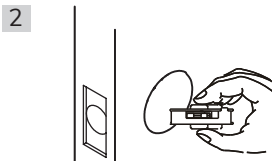
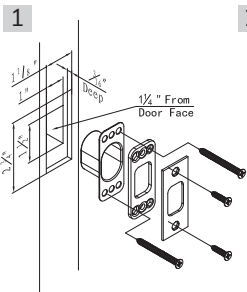


1. Start 43.5" (1105mm) from floor. Fold and apply template. Mark center of door edge.
2. Using either 2-3/8 or 2-3/4" backset as desired, mark center of hole on door face.



3. Drill 1" (25mm) hole for latch.
4. Drill 2-1/8" (54mm) hole on door face from both sides to avoid wood splitting.

### Lock Installation



1. Place strike on door jamb. Hand tighten screws.
2. Insert Deadbolt screw guide into the bore with the two locating pins facing the exterior of the door.
3. Insert Latch in hole on door edge. Hand tighten screws.
4. Place exterior escutcheon and cylinder on the exterior of door, making sure tailpiece enters latch in horizontal position.
5. Install deadbolt mounting plate on interior of door and hand tighten screws. Place thumb turn and hand tighten screws.

### TEMPLATE

Fold on dotted line and fit on door edge

45 40 35  
1-3/4" 1-9/16" 1-3/8"

Make 1" (25.4mm) hole at center of door edge.

FOR BACKSET 2-3/4" (70mm)

FOR BACKSET 2-3/8" (60mm)

Ø 2-1/8" (54mm)

